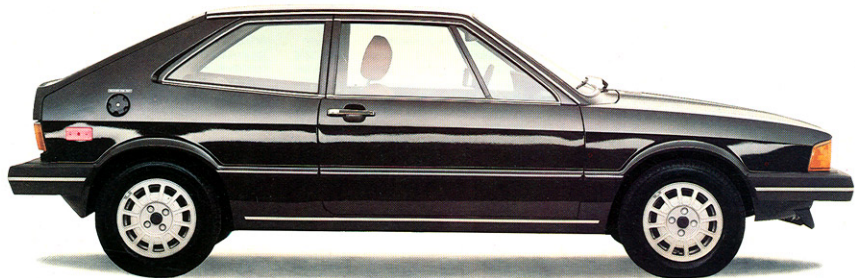


Scirocco



The Volkswagen innovators: Designers, engineers, and craftsmen producing unique vehicles for the '80s.



Space Efficiency.

Scirocco is roomy. With more total passenger and trunk room than most other sports cars, and ample leg room so you can stretch out and relax.

How does Scirocco do it? Your answer is under the hood. Scirocco's engine is mounted transversely. Together with space-saving front wheel drive, this means more room for passengers. A rear seat for two on short trips. And trunk space that's absolutely astounding. You can even fold down the rear seatback and get enough space for really bulky items.

VW engineers and designers scored a breakthrough with Scirocco that produced one of the most space efficient sports cars in automotive history. Years later, other manufacturers are still trying to copy it.

Volkswagen does it again.



Fuel Efficiency.

Volkswagen is the leading pioneer of fuel-efficient automotive powerplants.

The fuel-efficient Scirocco comes standard with a 1.7 liter overhead cam, fuel-injected engine. Ask your dealer to give you the EPA Mileage Guide, so that you can compare Scirocco with other sports cars.

To achieve Scirocco's outstanding combination of fuel-efficiency* and performance, the body was designed and refined in Europe's largest climate-controlled wind tunnel. And computer-assisted design was used to add strength without adding weight.

Volkswagen does it again.



Passive Safety.

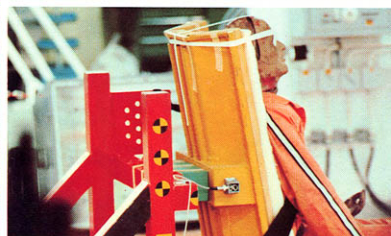
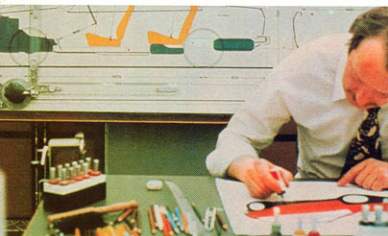
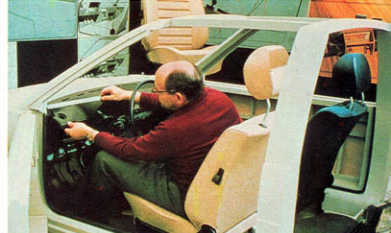
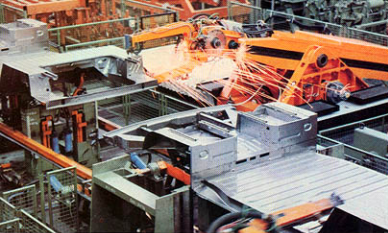
Volkswagen has long been a leader in developing passive safety technology to protect both driver and passenger. From occupant restraints to impact-dissipating structures and interiors that help reduce injuries.

Scirocco has gained wide-spread acceptance—not just as a fast, reliable sports car—but also as one with many reassuring passive safety features.

As a discerning sports car driver, you will notice Scirocco's many passive safety features wherever you look. Slip behind the wheel and test drive Scirocco. You'll sense the kind of peace-of-mind features best appreciated on the road and track.

Volkswagen does it again.





Active Safety.

Scirocco's active safety features help make you a better, more "in control" driver. Few cars can surpass Scirocco's exceptional "all around" visibility. Or Scirocco's logical placement of controls. And Scirocco's front wheel drive and directional control give you the type of handling to help you be more responsive.

Test drive Scirocco. You'll experience more confidence and control behind the wheel than you ever thought you could.

Innovative design solutions, key to Scirocco's active safety, are reflected in the way Scirocco feels and responds on all kinds of roads.

Is it any wonder so many drivers are opting for Scirocco's active, precise control.

Volkswagen does it again.



Human Engineering.

Many car makers talk about human engineering. Few pursue it as tenaciously as VW.

Front bucket seats that recline and adjust up and down, and fore and aft, make Scirocco comfortable for tall and short people alike.

Human engineering has been refined to the smallest detail. Smooth movement of switches; logical placement of instruments and warning lights; and ease of clutch, brake, and gearshift operation.

Human engineering, above all else, is what makes Scirocco unique among sports and grand touring cars.

Volkswagen does it again.



Total Performance.

In Scirocco, total performance means many things. Outstanding fuel efficiency. Exhilarating handling from an advanced, fully independent suspension. And the proven, front wheel drive.

Total performance also means quality you can see and feel. Scirocco is crafted by the proud, highly skilled coach builders at the Karmann Works.

In the final analysis, quality cannot be improvised; it must be designed in from the very beginning. When you seek a sports car with crisp performance and outstanding styling — capable of delivering total performance — test drive Scirocco. You'll experience total satisfaction.

Volkswagen does it again.



Aerodynamic styling
by Giugiaro.

1.7L fuel-injected
OHC engine.

4-wheel independent
suspension.

5-speed std. or
optional automatic.

Front wheel drive.



Scirocco, Indiana Red Metallic.

Scirocco. It's what most sports cars only pretend to be.

Scirocco goes beyond the conventional sports car. It's the one that proves sports cars don't have to be cramped, skimpy on luggage space, hard to see out of, rough to ride in, and difficult to service.

If you think that's hard to believe, drive a Scirocco and see for yourself. The proven front wheel drive provides you with directional control on straights and turns. And when it comes to inside space, bring three friends along. Scirocco's 2+2 seating means there's room for all



Scirocco instrumentation includes tachometer and trip odometer.



5-speed manual with 4th/5th overdrive ratio.



Scirocco interior: Red leatherette. Both front seats have individual height adjustments, standard.

four of you. Or fold down the back seat, and you create additional space for the extras you want to take along.

Scirocco's good looks come to you straight-out of the famous styling studio of Giugiaro. One reason Scirocco goes as good as it looks is that its body styling was refined in the wind tunnel to reduce aerodynamic drag to a minimum.

Inside, Scirocco is a superbly comfortable grand touring car. The front bucket seats are anatomically de-

signed. And both adjust up and down as well as front-to-back and reclining. So whether you're short or tall, Scirocco will fit you like few other cars can.

At a time when most other cars are beginning to look more and more alike, Scirocco gives you an exclusive look that's set well apart from the pack. And, at a time when many car makers are asking you to settle for less room and less performance, Scirocco is offering you a full measure of both.

Volkswagen does it again.

Specifications, standard equipment and options
subject to change without notice.



Scirocco S.

For the most discriminating and demanding sports car enthusiast, there's Scirocco S. These specially styled models offer many exclusive touches that set them apart from anything else on the road.

All trim is black. VW radiator badge is red, as are lettering on hatchback door and belt-line moulding. Rocker panels are handsome matte black. Five-speed transmission is standard. So are the large front spoiler, 175/70SR13 tires, light alloy wheels, and much more!

Scirocco S is available exclusively in Cirrus Gray

Metallic, Cosmos Silver Metallic, and Mars Red. (Details on page 11.)

The interior is highlighted by sporty, striped fabric on seats. (Black/red stripe shown at right. Also available in Black/silver.) These are specially designed sport seats for maximum lateral support, especially appreciated in fast cornering.

This newest addition to the Scirocco marque is ideal for the sports car enthusiast desiring the ultimate expression of Scirocco's crisp, aerodynamic styling, 2+2 comfort, plus performance and handling.

Specifications, standard equipment and options subject to change without notice.



Electric rear window defroster.
Huge trunk!
Seat up: 14 cu. ft.
Seat down: 19.1 cu. ft.
Cross-flow radiator
2+2 seating
Power-assisted, self-adjusting front disc brakes.



Scirocco, Sand Metallic.

Scirocco. The sports car with more luggage space than many sedans.

Few people expect the kind of room they find hidden beneath Scirocco's hatch. After all, sports cars aren't supposed to have this much luggage space. At Volkswagen, we believe that any car, sports car or not, should have plenty of room for the necessary accoutrements of your lifestyle. From large suitcases and golf bags with folding golf carts, to scuba gear and gardening supplies.

That's why Scirocco is designed to do triple duty: Weekend leisure car, workday transport, and grand touring sports car capable of extraordinary handling and performance. You can choose from two Scirocco versions. Both products of the superb body work that Karmann Coachworks have been known for since the era of the royal state coach. And both deliver driving fun matched by few other cars.



Few sports cars come close to its 14 cu. ft. load capacity.



With rear seat folded, Scirocco carries 2 golf bags & folding carts.



Super Vee racing class uses successful Scirocco fuel injected, overhead cam engine.

Which one is right for you? Your Volkswagen dealer will be pleased to arrange a test drive to help you decide. Slip behind the wheel and adjust the bucket seat precisely to your liking. Check out the transmission—Scirocco comes standard with a 5-speed manual. Or you can choose the optional smooth, efficient automatic. Turn the key and step on the gas. The powerful, 1.7 liter fuel-injected overhead cam engine bursts into action. You're impressed with how quiet it is. And how it does its work without strain, eager and free revving.

As you pilot the Scirocco through its test run, you're impressed with the great visibility afforded by Scirocco's low, sloping hood. And as your drive turns into a rather pleasant, yet eye-opening experience, you may find yourself thinking...

Volkswagen does it again.



5-speed manual transmission.

Silky 3-speed automatic.



Air conditioning makes Scirocco grand touring even grander.



Hatch-window wiper/washer, a great option.

Scirocco Options:

While there aren't very many options, there are a few items you may wish to add to make driving your new Scirocco even more personally enjoyable. • Air Conditioning • Automatic Transmission • Sun Roof • Rear Window Wiper/Washer

Specifications, standard equipment and options subject to change without notice.

Scirocco Colors and Trims:

Exterior Colors



Mars Red



Black



Alpine White



Cedar Green Metallic



Indiana Red Metallic



Cirrus Gray Metallic



Sand Metallic



Cosmos Silver Metallic

Scirocco Specifications:

ENGINE

Number of cylinders	4
Bore x Stroke	Inches 3.13 x 3.40 Metric 79.5mm x 86.40mm
Compression ratio	105.0/1715 8.2:1
Horsepower, SAE net	74 HP @ 5000 rpm
Maximum torque, SAE net	89.6 ft. lbs. @ 3000 rpm
Fuel requirement	Unleaded fuel only

ENGINE DESIGN

Engine block	Cast iron
Cylinder head	Aluminum alloy
Valve train	Overhead cam, spur-belt driven
Cooling system	Water-cooled, thermostatically-controlled electric radiator fan, cross-flow aluminum radiator.
Radiator	20.7 in. (525mm) wide

ELECTRICAL SYSTEM

Rated voltage	12V
Alternator output	14V/65 Amps (max.) 910 Watts (max.)
Battery	12V/45 Amp/hr Electronic, breakerless
Ignition	Electronic, breakerless
Fuel/Air supply	Continuous Injection System (CIS)

CHASSIS AND SUSPENSION

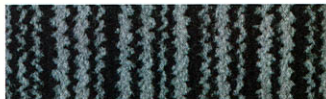
Front suspension	Independent, MacPherson struts Negative steering roll radius.
Rear suspension	Independent stabilizer axle with coil/shock absorber struts.
Chassis	Unitized body/chassis, bolt-on front fenders, two-plus-two seating, two-door sports hatchback.

PERFORMANCE

0-50 mph	8.2 sec.
Maximum speed	99 mph
Fuel consumption*	23 estimated mpg, 40 estimated highway mpg

Interior Fabrics

Three interior color codes are offered, either leatherette or cloth, for Scirocco models. Scirocco S cars have a special "Stripe" cloth seat trim. Interior panels and carpeting have been color-keyed to blend harmoniously with the seating fabric color. Ask your VW dealer to show you other possible interior/exterior color combinations.



Black Cloth

With all exterior colors, except Sand Metallic.



Black leatherette.



Red cloth.

With Mars Red, Black, Alpine White, Indiana Red Metallic, Cirrus Gray Metallic.



Red leatherette.

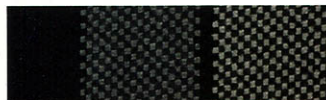


Gazelle cloth.

With Mars Red, Black, Alpine White, Cedar Green Metallic, Indiana Red Metallic, Sand Metallic.



Gazelle leatherette.



Black/Silver stripe cloth.

With Mars Red (Scirocco S only).



Black/Red stripe cloth.

With Cirrus Gray Metallic, Cosmos Silver Metallic (Scirocco S only).

The colors shown here are as accurate as modern high-speed printing permits. We suggest you ask your Volkswagen dealer to show you actual Scirocco models, as well as actual paint and fabric samples.

DRIVE TRAIN

Clutch	Single disc, dry
Transmission, manual,	1st: 3.45:1; 2nd: 1.94:1; 3rd: 1.29:1;
5-speed transverse, front-mounted,	4th: 0.91:1; 5th: 0.71:1;
fully-synchronized transaxle	Reverse: 3.17:1;
Transmission, automatic,	Final Drive: 3.89:1.
3-speed transverse, front-mounted transaxle	1st: 2.55:1; 2nd: 1.45:1;
	3rd: 1.00:1;
	Reverse: 2.46:1;
	Final drive: 3.56:1.
Final drive.....	Front wheel drive, double jointed drive axles with constant-velocity (CV) joints.

BRAKES AND WHEELS

Service brake	Power-assisted, dual-diagonal; discs, front; drums, rear
Emergency brake	Mechanical, acting on rear drums
Rim size	5J x 13
Tire size	175/70SR13 radial ply, steel belted
Steering	Rack and pinion, double-pivot steering column, 3.9 turns, lock to lock.

DIMENSIONS

Length/Width/Height (unladen)	Inches—155.7" L x 63.9" W x 51.5" H
	Metric—3955mm L x 1625mm W x 1310mm H
Wheelbase (inches/metric)	94.5"/2400mm
Track, front/rear	Inches—54.7"/53.5"
	Metric—1390mm/1358mm
Ground clearance (loaded)	Inches—4.6"
	Metric—117mm
Turning circle (curb to curb)	Approximately 31.2 ft./9.5m

CAPACITIES

Fuel tank	10.6 U.S. gallons (40 liters)
Engine oil	4.7 U.S. quarts
Coolant	1.3 U.S. gallons
Trunk size EPA (DIN)	14.0 cu. ft. (19.1 cu. ft. seat down)

*1980 EPA estimates. Compare these estimates with the "estimated mpg" of other cars. Mileage varies with speed, weather, and trip length. Highway mpg will probably be less. 1981 figures not available at time of printing.

Specifications, standard equipment and options are subject to change without notice.

The Volkswagen Family of Originals.



Rabbit.

In an era when most manufacturers are cutting performance, it is refreshing to find an extra measure of performance in the Rabbit. Plus room, comfort, handling and quality that's every inch VW. And there's even a convertible! All with Volkswagen's advanced engineering.



Scirocco.

An unbeatable combination: Aerodynamic styling by Giugiaro; fuel-injected, overhead-cam performance; and front wheel drive handling. Scirocco gives you real 2+2 seating comfort, and luggage space to match your lifestyle. You'll like the exclusive look and the superb fit and finish of coachwork by Karmann.



Dasher.

With this car, Volkswagen redefined the luxury car. Front wheel drive performance plus your choice of fuel-injected gasoline or Diesel powerplants. And, of course, all the amenities you expect from a luxury car. Enjoy the benefits of advanced engineering in a roomy Dasher sedan or station wagon.



Jetta.

The exciting luxury sport sedan with a trunk that is large enough for six good size suitcases. Fit and finish in the tradition of fine European sedans, plus the advanced engineering that has become a VW trademark.



VW Pickup Truck.

An exciting sports pickup truck. Front wheel drive for easier handling, and a fuel-injected gasoline or Diesel powerplant for great performance. Practical and fun to drive. It looks like a truck—but it drives like something else!



Vanagon/Vanagon® Camper.

Another exciting Volkswagen original. With great looks and advanced engineering from the ground up. It combines the best of a van with the best of a wagon. The Vanagon Camper carries on a long tradition of careful craftsmanship and flawless design.

**VOLKSWAGEN
DOES IT
AGAIN**



Volkswagen of America, Inc. believes the specifications in this brochure to be correct at time of printing. However, specifications, standard equipment, and options are subject to change without notice.