

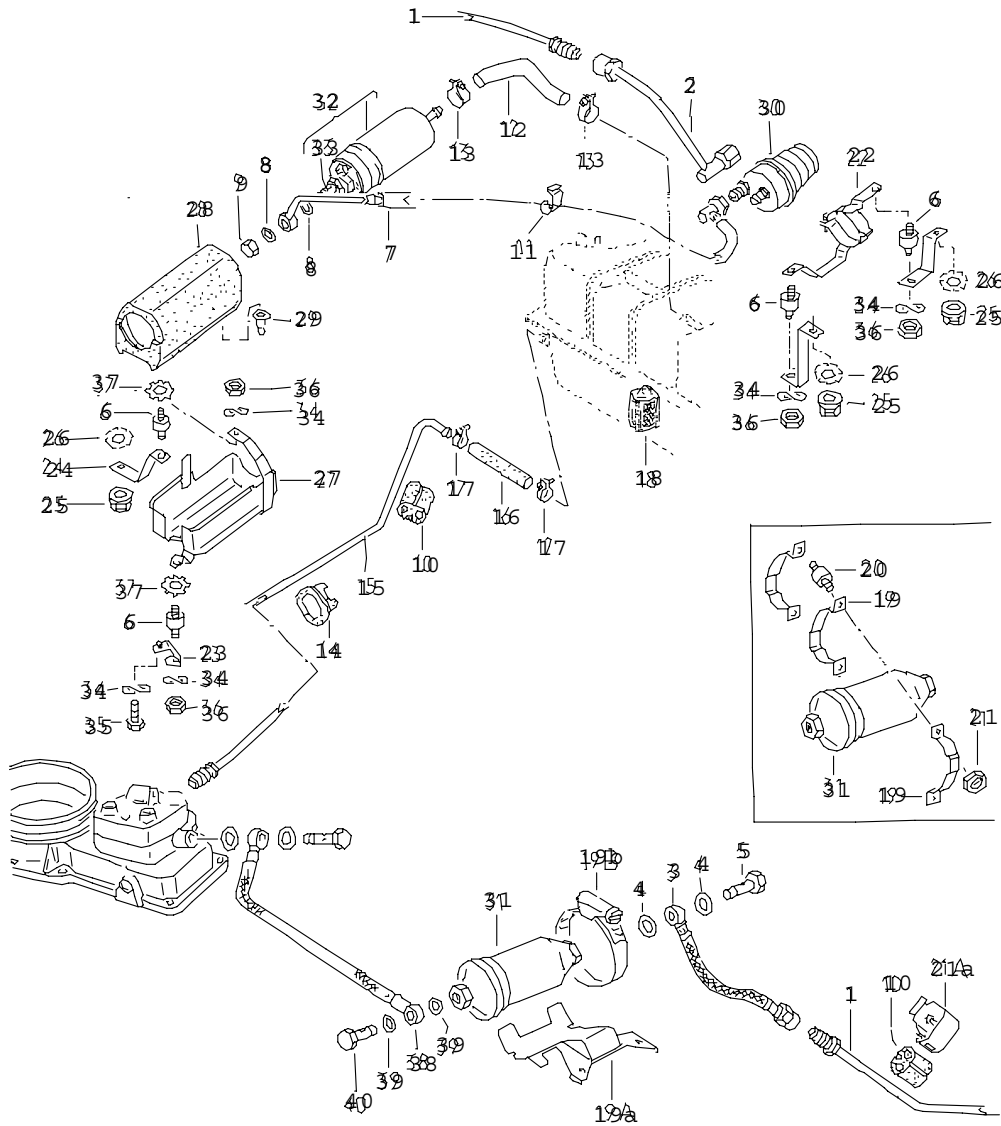


ETKA



Model	Year	MG	SG	Illustration	Restrictions	Update		
COR	79	2	01	44-00	Scir.	450	19:32	11.04.2006

44



MOD 11/53-79 1-80



ETKA



Model	Year	MG	SG	Illustration	Restrictions	Update	19:32	11.04.2006
COR	79	2	01	44-00	Scir.	450		

Pos	Part Number	Name	Remarks	Qty	Model
		accumulator fuel filter fuel pump fuel pipe			K-JETRONIC: EG, EH, EJ
1	---	no longer available			
(1)	171 201 217 D	fuel pipe F 15A 0800 001>> F 16A 0000 001>> F 17A 0000 001>> F 53A 0000 001>>		1 1 1 1	EG EG, EH, EJ EG EG, EH, EJ
2	171 201 218 C	fuel pipe		1	
3	171 201 218 D	fuel pipe		1	
4	049 133 696 B	seal	14,7X22	2	
5	N 903 580 03	banto bolt	10-2/M14X1,5	1	
6	171 121 275 E	bonded rubber mounting		4	
7	171 201 220 D	fuel pipe		1	
8	N 013 812 8	seal	A12X15,5X1,5	2	
9	N 011 069 1	domed cap nut	M12X1,5	1	
10	171 201 245	protective cover		9	
11	---	no longer available			
12	171 201 311 D	elbow		1	
13	N 102 582 01	pipe clip	AL12-22	2	
14	171 201 339	grommet		1	
(15)	---	no longer available	return		
		F >> 159 2810 000		1	EG
		F >> 179 3750 000		1	EG
		F >> 539 2200 000		1	EG
(15)	---	no longer available			
		F 15A 0800 001>>		1	EG
		F 16A 0000 001>>		1	EG
		F 17A 0000 001>>		1	EG
		F 53A 0000 001>>		1	EG
-	N 020 281 1	hose in coils of 5m 'order unit 5'	7X3	*	
16		shorten to:	185MM	1	
17	N 024 122 2	pipe clip	9X11-15	2	
18		see illustration:	42		
19	---	no longer available			



ETKA



Model	Year	MG	SG	Illustration	Restrictions	Update	19:32	11.04.2006
COR	79	2	01	44-00	Scir.	450		

Pos	Part Number	Name	Remarks	Qty	Model
(19A)	067 133 572	retainer			
		F 15A 0800 001>>		1	
		F 16A 0000 001>>		1	
		F 17A 0000 001>>		1	
		F 53A 0000 001>>		1	
19B	111 501 159 B	hose clip	44-66		
		F 15A 0800 001>>		1	
		F 16A 0000 001>>		1	
		F 17A 0000 001>>		1	
		F 53A 0000 001>>		1	
20	803 121 275 A	bonded rubber mounting			
		F >> 159 2810 000		2	
		F >> 179 3750 000		2	
		F >> 539 2200 000		2	
21	N 011 006 24	hexagonal nut	M6		
		F >> 159 2810 000		2	
		F >> 179 3750 000		2	
		F >> 539 2200 000		2	
21A	171 201 449 A	clips			
		F 159 2800 001>>		X	
		F 16A 0000 001>>		X	
		F 17A 0000 001>>		X	
		F 53A 0000 001>>		X	
22	171 201 515	bracket for accumulator		1	
23	171 201 503 A	bracket for fuel pump		1	
24	171 201 505 F	bracket for fuel pump		1	
25	N 902 264 03	shouldered hex. nut, self-locking	M8	3	
26	N 012 108 2	lock washer	A8,4	3	
27	171 201 761 B	casing for fuel pump		1	
28	155 201 769	sound absorber for fuel pump		1	
29	--- --- ---	no longer available		X	
30	--- --- ---	no longer available			
		F >> 17A 0406 878		1	EG, EH, EJ
		F >> 15A 0807 144		1	EG, EJ
		F >> 16A 0375 454		1	EG, EJ
		F >> 53A 0042 050		1	EG, EH, EJ



ETKA



Model	Year	MG	SG	Illustration	Restrictions	Update		
COR	79	2	01	44-00	Scir.	450	19:32	11.04.2006

Pos	Part Number	Name	Remarks	Qty	Model
(30)	431 133 441 C	accumulator F 15A 0807 145>> F 16A 0375 455>> F 17A 0406 879>> F 53A 0042 051>>		1 1 1 1	EG, EJ EG, EJ EG, EJ EG, EJ
31	431 133 511	fuel filter		1	
32	171 906 091 A	fuel pump		1	
33	893 906 093	non-return valve		1	
34	N 012 226 5	spring washer	B6X12X0,5	4	
35	N 010 212 26	hexagonal head bolt	M6X12	1	
36	N 011 006 24	hexagonal nut	M6	4	
37	N 012 127 2	shake-proof washer	A6,4	2	
38		see illustration:	36		
39		see illustration:	36		
40		see illustration:	36		
		- - - E N D - - -			